



882 Wilson Road  
P.O. Box 477  
Newberry, SC 29108

**Office Hours**

8 a.m.–5 p.m. Monday–Friday

**General Information**

(803) 276-1121  
(800) 479-8838  
Fax: (803) 276-4121  
nec.coop

**Nights, Weekends, Holidays**

(803) 276-1121

**President & Chief Executive Officer**

G. Keith Avery

**Board of Trustees**

- William D. Kibler, *Chairman*
- C.J. Bishop, *Vice Chairman*
- Johnnie Dickert, *Secretary-Treasurer*
- Richard O. Koon, *Zone 3*
- William B. Lominick, *Zone 1*
- J. Wayne Nichols, *Zone 2*
- Harold L. Pitts, *Zone 2*
- Patty H. Ruff, *Zone 3*
- Tobie R. Shealy, *Zone 3*

*In observance of the Labor Day holiday, Newberry Electric Cooperative will be closed on Monday, September 5. Power outages may be reported by calling (803) 276-1121. Emergency crews are on standby.*



Your Touchstone Energy® Partner

## How we handle widespread outages



**WITH THE STORM** season upon us, this is a prime time to remind Newberry Electric Cooperative members of how the co-op restores service when widespread outages occur.

The main goal is to safely restore power to the greatest number of members in the shortest time possible. If there is damage to power plants, substations or transmission lines, those

facilities must be repaired by our power supplier before we can restore your service. Transmission lines seldom fail, but they can be damaged by ice storms, thunder and lightning storms, tornadoes and hurricanes. Tens of thousands of people could be served by a single high-voltage transmission line.

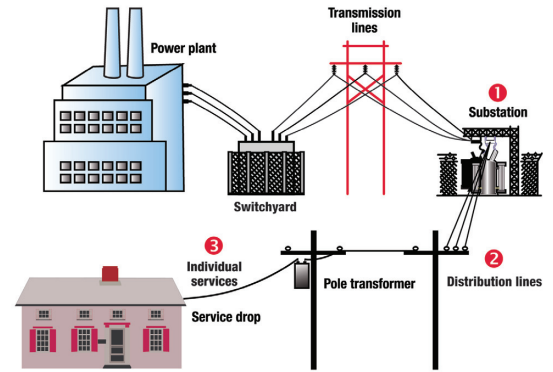
When those facilities are operational, problems in our local co-op's electric distribution system can be corrected. Three primary areas of the co-op's electric distribution system must be addressed.

### 1—Substations repaired first

If a storm has damaged the main power substation, repairs will need to be made here first before power can flow down the power lines. We have several local distribution substations, each serving thousands of members. When a major outage occurs, the local distribution substations are inspected first. If the problem can be corrected at the substation level, power may be restored to a large number of consumers.

### 2—Distribution lines repaired

During a power outage, the main distribution supply lines are patrolled and inspected for damage, from the substation outward. As the lines are being patrolled, repairs are being made and certain sections of lines may



have power restored during this process. Once the entire line has been inspected, all power can be restored to that particular substation circuit. This same process will then be completed on circuits at other substation locations, affected by an outage.

### 3—Individual services restored

The focus then shifts to service lines to individual member's homes. Service lines carry power from the transformer to members' homes, outbuildings, pumps, etc. If a member's service line to the home has been damaged, they might be without power while their neighbor has power. Any damage observed to a service line should be reported to the co-op. If a service to a home has damage to the weatherhead, meter base or the conduit above the meter base, it's the member's responsibility to have those repaired by a licensed electrician and then notify the co-op for power restoration. As a reminder, always check your home's main circuit breaker to ensure it has not tripped and caused the power outage.

**G. Keith Avery**  
*President and Chief Executive Officer*

## Energy-efficient option for an old refrigerator: Recycle it!



Employee and member Jeffery Turner and his mother, Martha, dispose of an old refrigerator that's been in the family for generations.

**YOU MOVED YOUR** old fridge to the garage or basement when you bought a new Energy Star-qualified refrigerator. But when you realized how much energy—and money—it was costing just to keep a few drinks cold, you pulled the plug on that old refrigerator.

Now what? Here's a tip from Newberry Electric Cooperative that can earn you some cash.

The best way to dispose of an old fridge is to recycle it. And if that fridge is more than 17 years old, it should be recycled. That's because the refrigerant and insulation in older refrigerators may contain chemicals—chlorofluorocarbons or CFCs—that are a potent greenhouse gas. Recycling a refrigerator bought before

1993 ensures that CFCs aren't released into the atmosphere.

Recycling also saves energy, enough to light a 13-watt Energy Star compact fluorescent light bulb for more than two and a half years. And recycling saves the steel in an old refrigerator—approximately 123 pounds—which can then be used to make new products.

Call your local recycling center for any special instructions regarding recycling old refrigerators. The majority of the recycling centers in Newberry County do accept old refrigerators.

**For other tips on how to save energy—and money—visit Touchstone Energy's energy-saving website at TogetherWeSave.com. You will discover just how quickly little changes add up.**

### Cooperatives support state, local governments

Many folks have the misconception that because cooperatives are non-profit organizations, they are not required to pay taxes. This couldn't be further from the truth. Newberry Electric Cooperative is one of the largest taxpayers in the county.

Like the other 19 cooperatives across the state, Newberry Electric Cooperative supports state and local governments through the amount of taxes paid to each annually. Newberry Electric Co-op paid out more than \$1.2 million in real property and vehicle property taxes in 2010, thus contributing to the funding of schools, law enforcement, and emergency services, as well as infrastructure throughout the county.

Newberry Electric also paid an additional \$402,432 in state sales tax and \$103,384 in power excise taxes.

Newberry Electric co-op is proud to be a significant contributor to the tax base of Newberry County. We want

to do our part in making this county a better place to live. Our CEO, Board of Trustees, staff and employees realize that this organization doesn't just serve the community; we're also part of it.

		PO Box 477 882 Wilson Road Newberry, SC 29108			
	Vendor 368	Check No. 31558	Date 12/21/10	Amount of Check \$ 1,160,396.22	No. 31558
PAY ONE MILLION, ONE HUNDRED SIXTY THOUSAND, THREE HUNDRED NINETY SIX DOLLARS AND 22/100 CENTS					
TO THE ORDER OF Karen D. Lindler County Treasurer PO Box 206 Newberry, SC 29108			TWO SIGNATURES REQUIRED TO BE VALID _____ NEC CHAIRMAN OF THE BOARD AUTHORIZED SIGNATURE _____ NEC SECRETARY-TREASURER AUTHORIZED SIGNATURE		